



„BENEFITS FROM GEOCODING INFORMATION COLLECTED IN STATISTICAL SURVEYS”

POLAND

1/30

Amelia Wardzińska-Sharif

Programming and Coordination of Statistical Survey Department

Central Statistical Office of Poland

Q2014, 2-5 June 2014 Vienna

GIS TECHNOLOGY

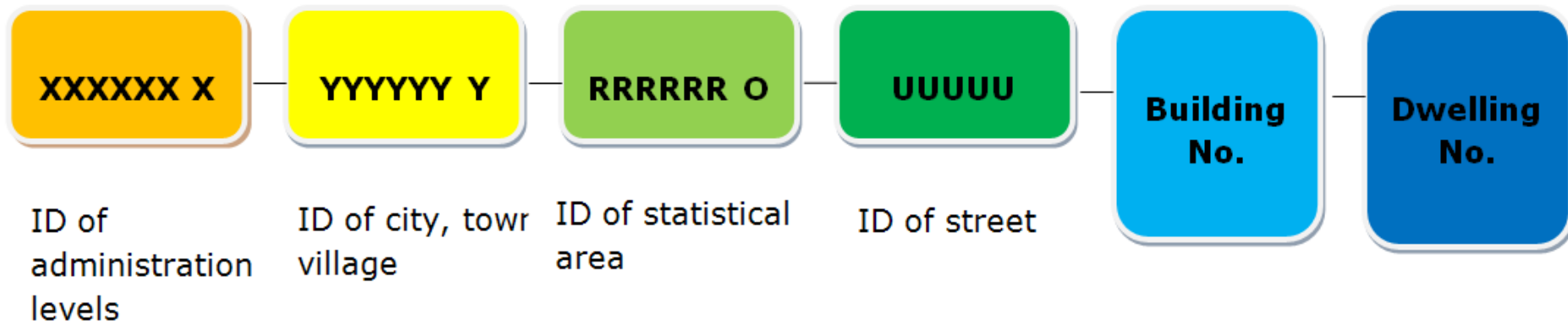
In 2010 Census Round a combination of data coming from administrative sources and registers containing spatial data was used for the first time.



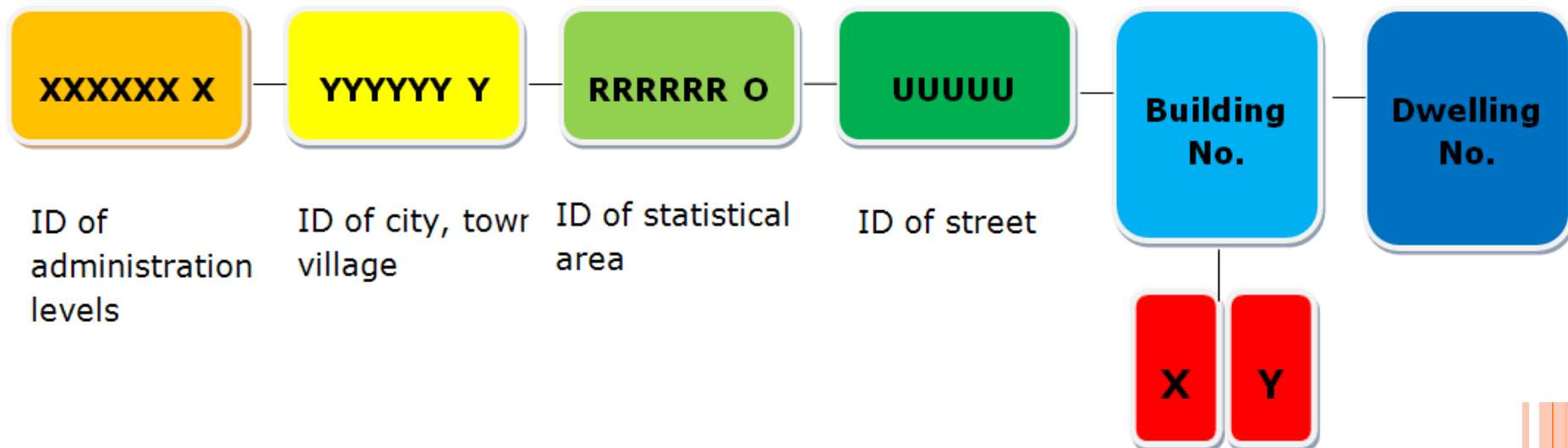
BASE FOR X,Y - GEOCODING

- Territorial Identification Registry (System TERYT) provides location data of all statistical units as the address-point of a related building
- Location of buildings is specified using geographical x,y coordinates, giving the exact location of each building and make possibility to linking microdata from several registers.

ADDRESS POINT IDENTIFICATION SYSTEM



SPATIAL ADDRESS POINT IDENTIFICATION SYSTEM

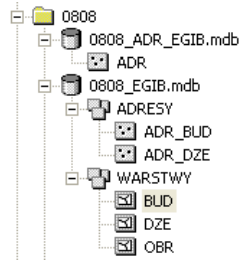


WORK SCHEDULE



- reference material collection

January 2009 – December 2009

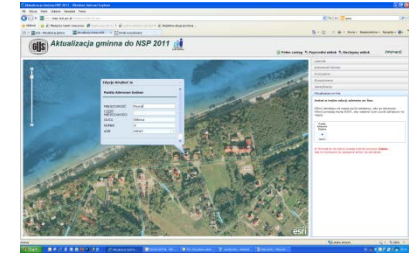


January 2010 – May 2010

- reference material processing

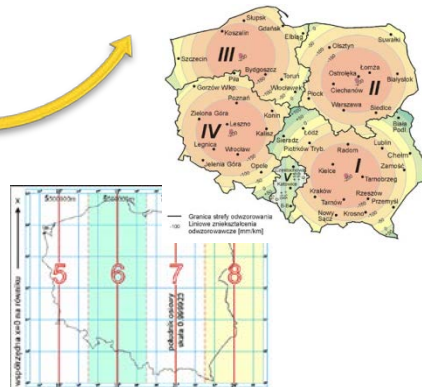
- address point update
- (gmina update, pre-census field check, census survey)

Censuses 2010 and 2011



continuously since 2011

- address point database update



SPATIAL DATA COMPILED IN THE STATISTICS TODAY



Statistical address points

- address points for residential buildings



Statistical distribution boundaries

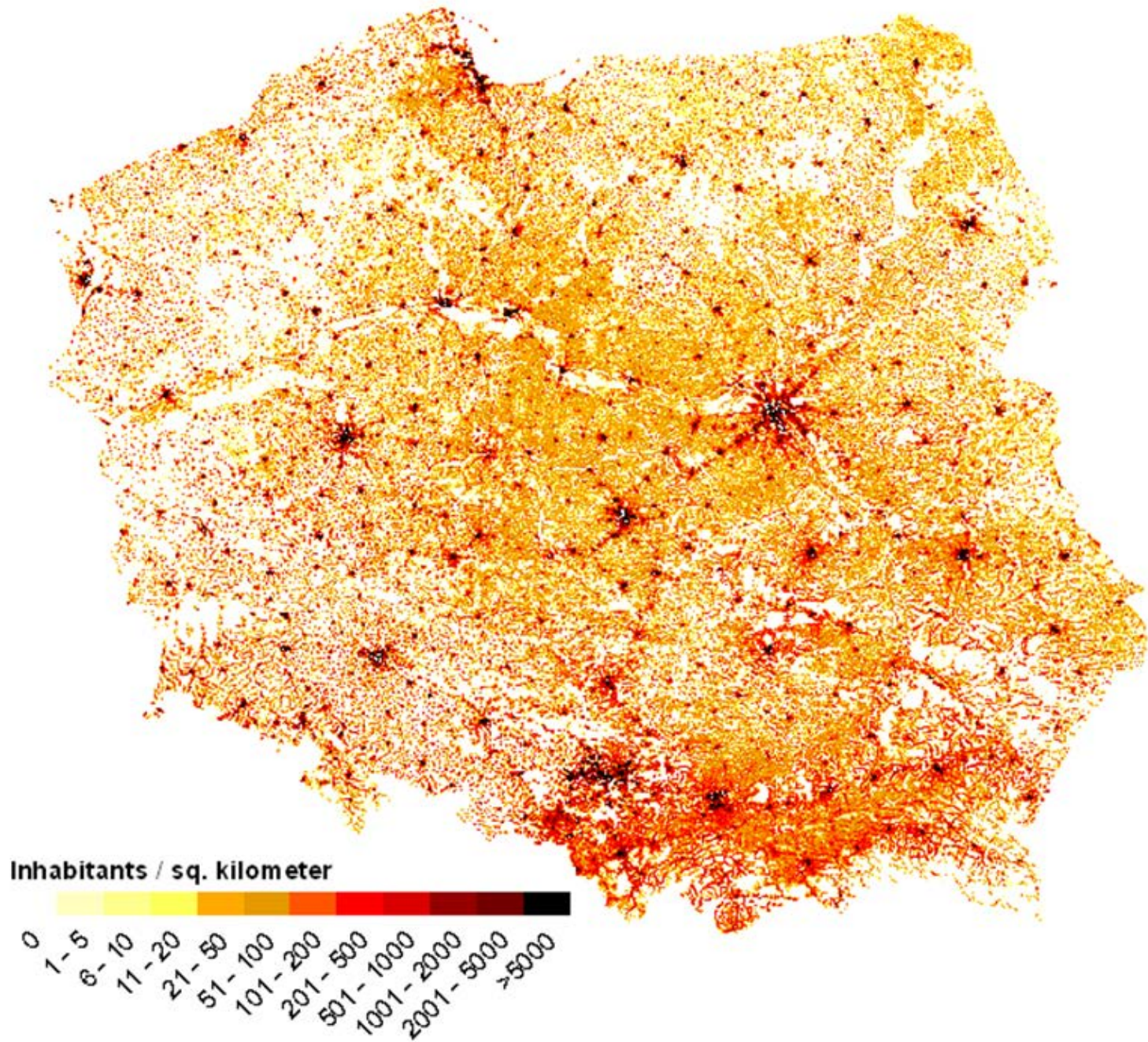
- statistical regions
- enumeration areas

PROJECTS

- **GEOSTAT 1A**
- *GEOSTAT 1B (on a voluntary basis)*
- **GEOSTAT 1C (in progress)**
- **„Merging statistics and geospatial information in Member States”**

Poland Population Density Map 2006

GEOSTAT 1A



GENERAL AND SPECIFIC OBJECTIVES

Geospatial analysis with
use of data:

collected during National
Population and Housing
Census 2011

other geospatial datasets
possessed by CSO

- For census purposes a **statistical address point database** with locations of all dwellings in Poland has been created.
- The database is to be expanded with **enterprises locations**.

GENERAL AND SPECIFIC OBJECTIVES

Creating **spatial address points database for enterprises** in the test area.

Analysis of **different methods of demographic data visualization** in various divisions, such as stat. regions, census enumeration areas, cadastral units, 1 km grid

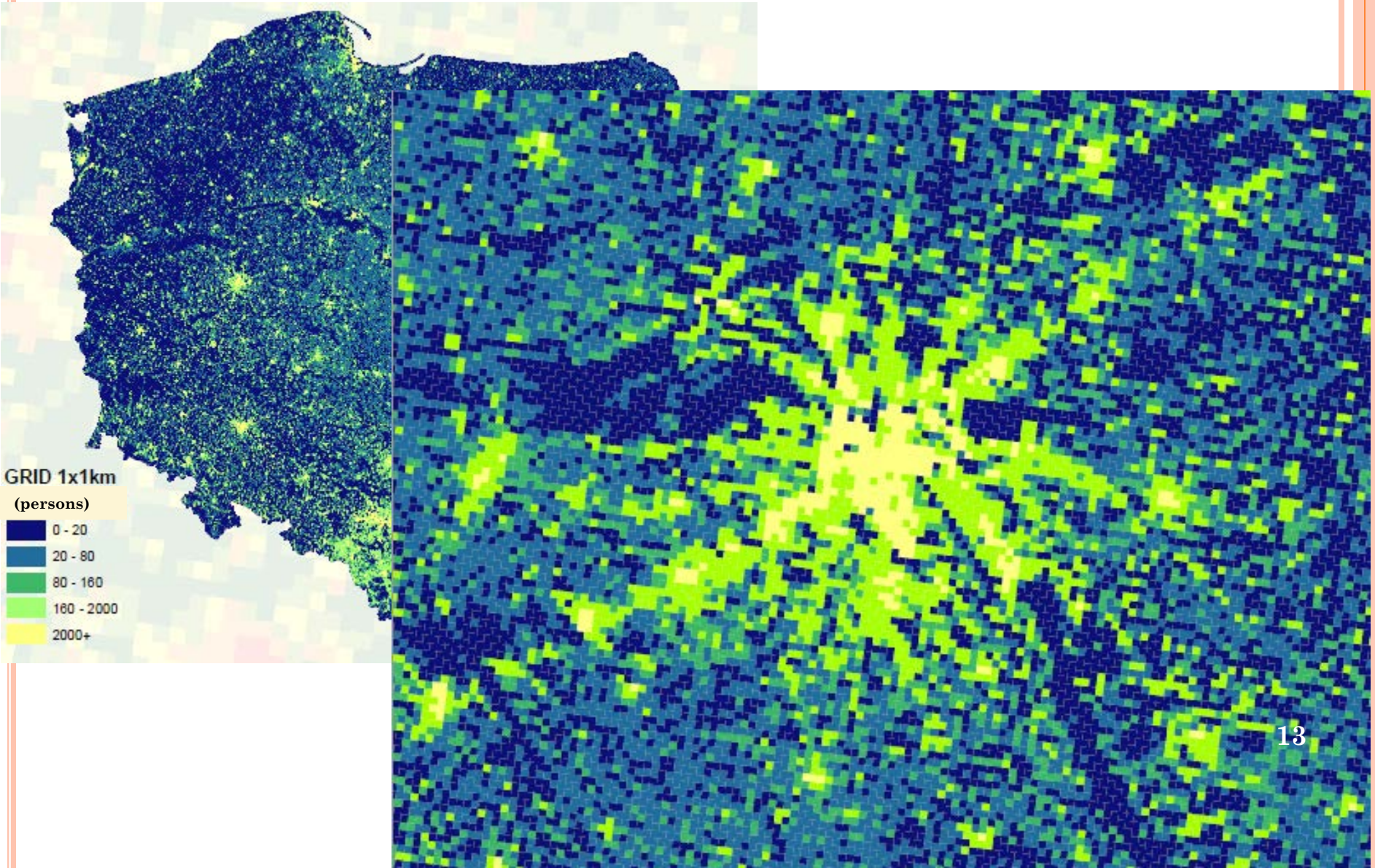
Commuting survey 2011 (based on the Population and Housing Census) **result analysis**, using GIS tools.

Analysis of **spatial data from Topographic Database usability** for creation of statistical indicators describing the **state of planning**. Defining methodology for visualizing these indicators on maps.

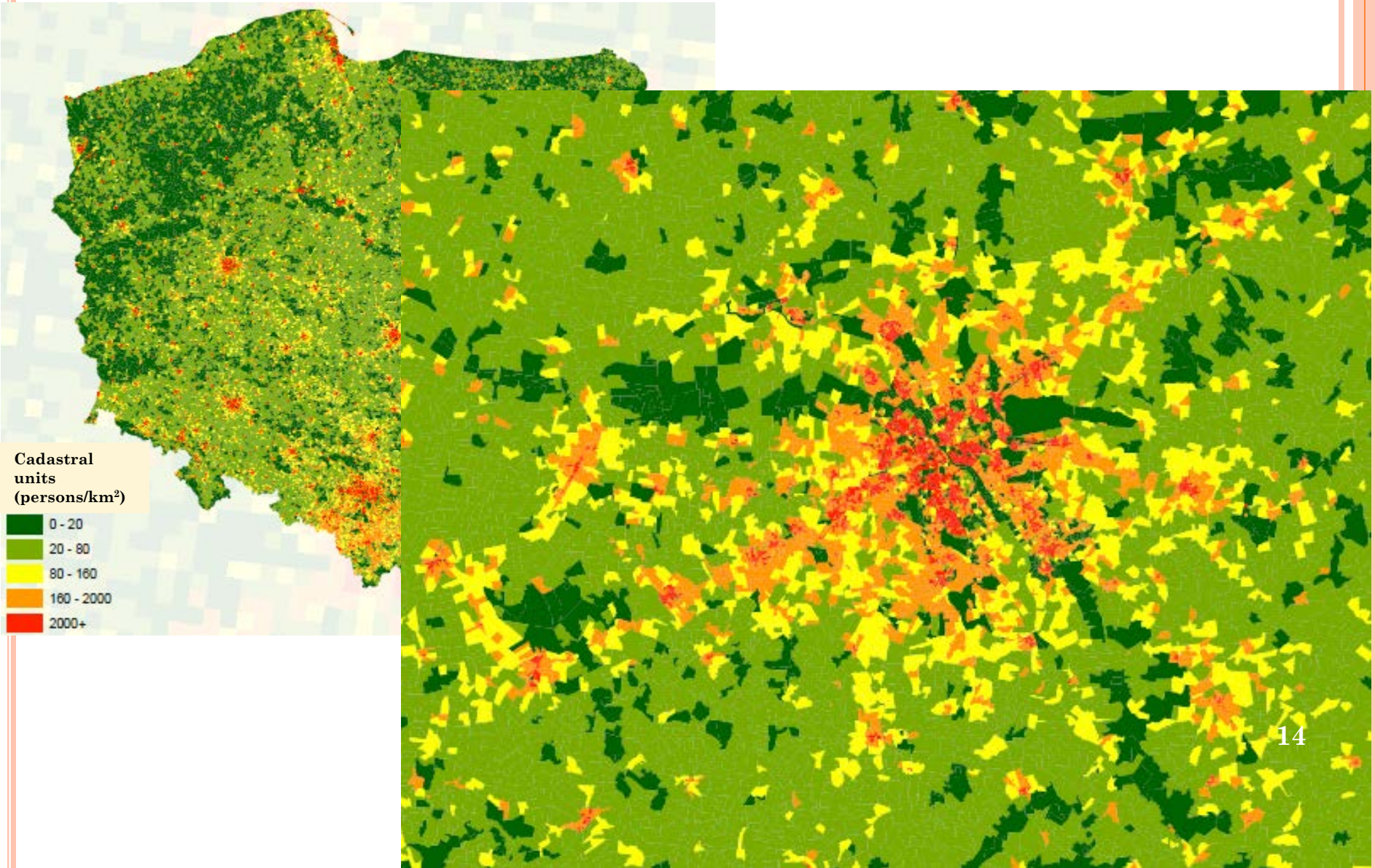
ACHIEVEMENTS

- Database with **enterprises coordinates** for 100% of the population for which it was possible to identify the address
- **perfect for the visualisation** of many phenomena related to the **place of work**

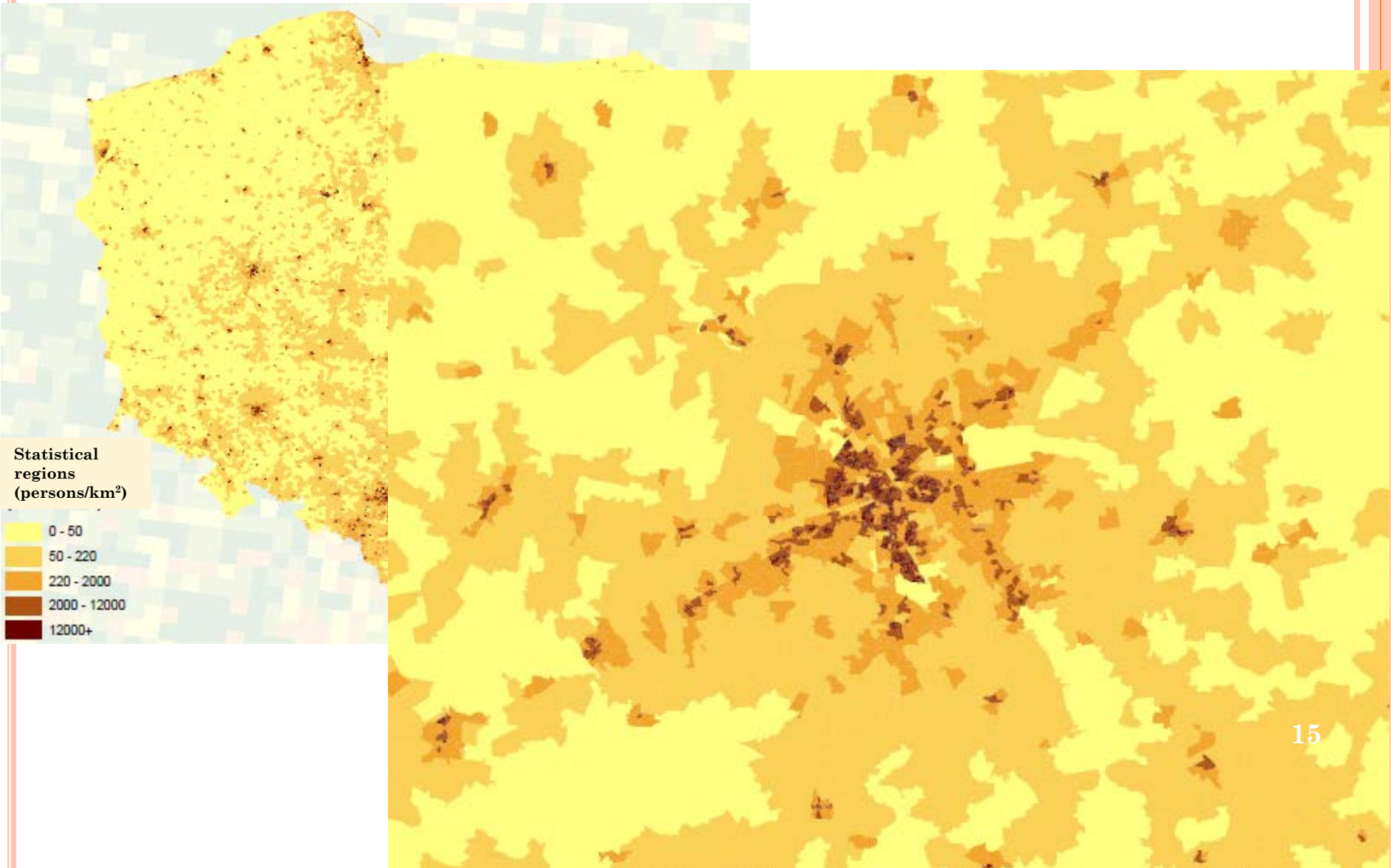
DEMOGRAPHIC DATA IN 1 KM GRID

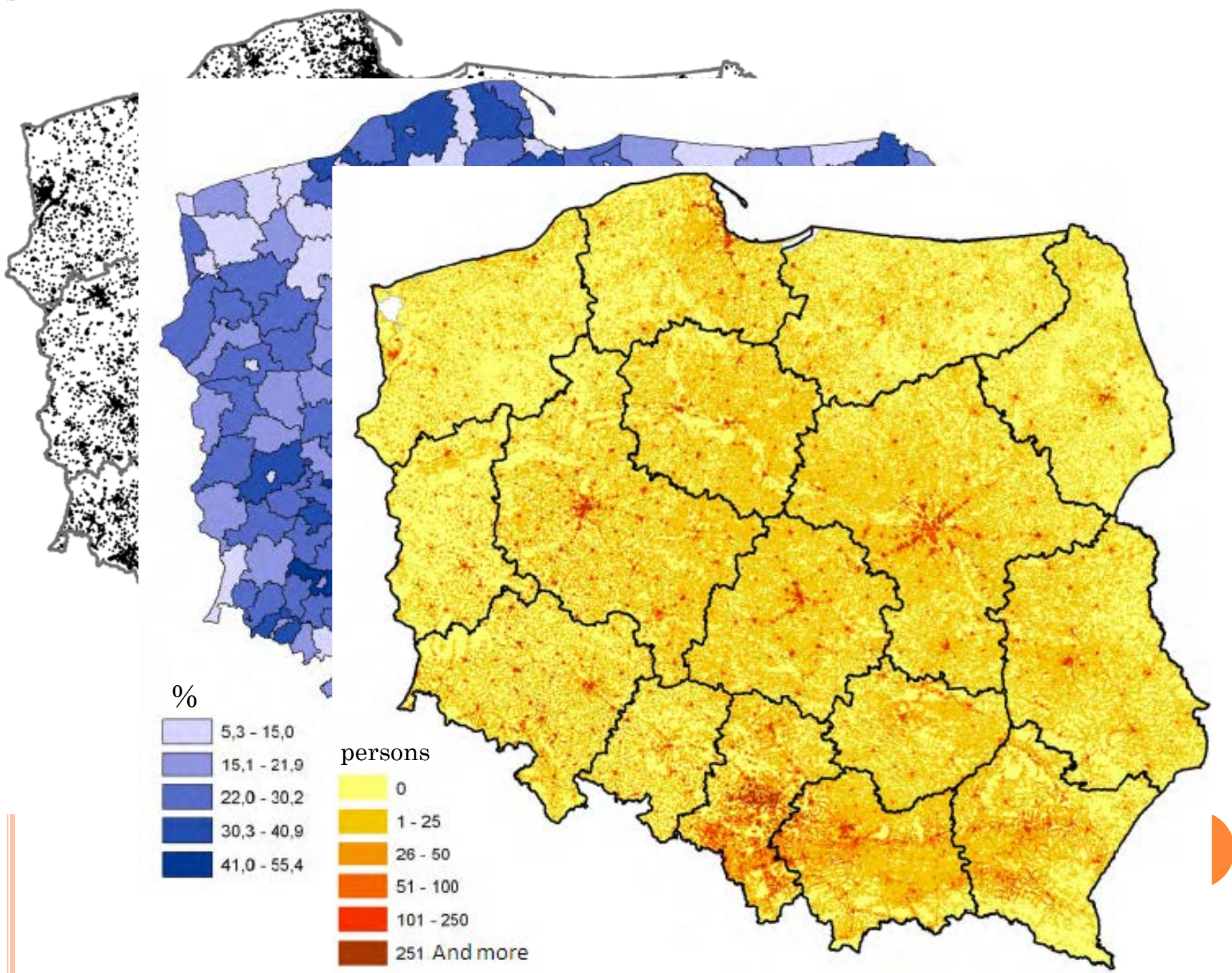


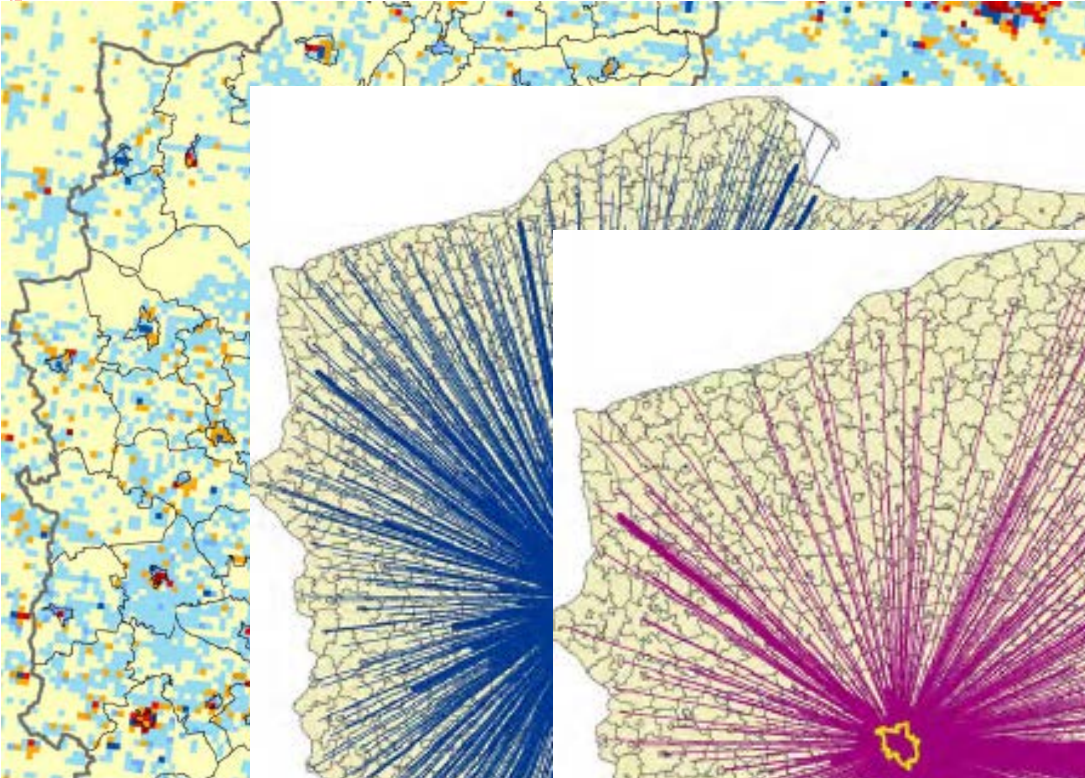
DEMOGRAPHIC DATA IN CADASTRAL UNITS





DEMOGRAPHIC DATA IN STATISTICAL REGIONS















Legenda

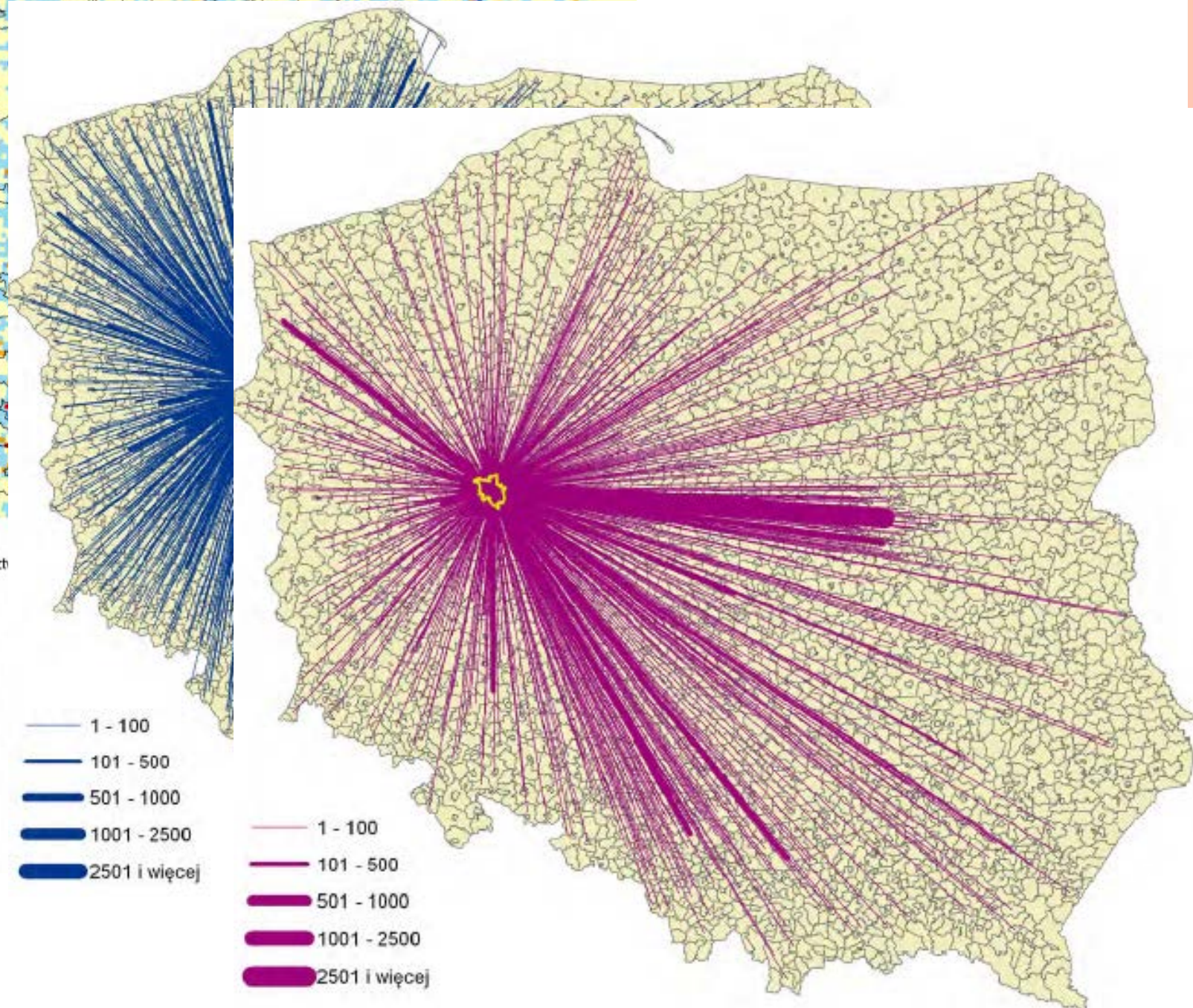
-  granica wojewodzt
-  granice gmin

W osobach:

-  -100 i mniej
-  -99 - -50
-  -49 - -1
-  0
-  1 - 50
-  51 - 100
-  101 - 500
-  501 i więcej

-  1 - 100
-  101 - 500
-  501 - 1000
-  1001 - 2500
-  2501 i więcej

-  1 - 100
-  101 - 500
-  501 - 1000
-  1001 - 2500
-  2501 i więcej



DEVELOPMENT RATE

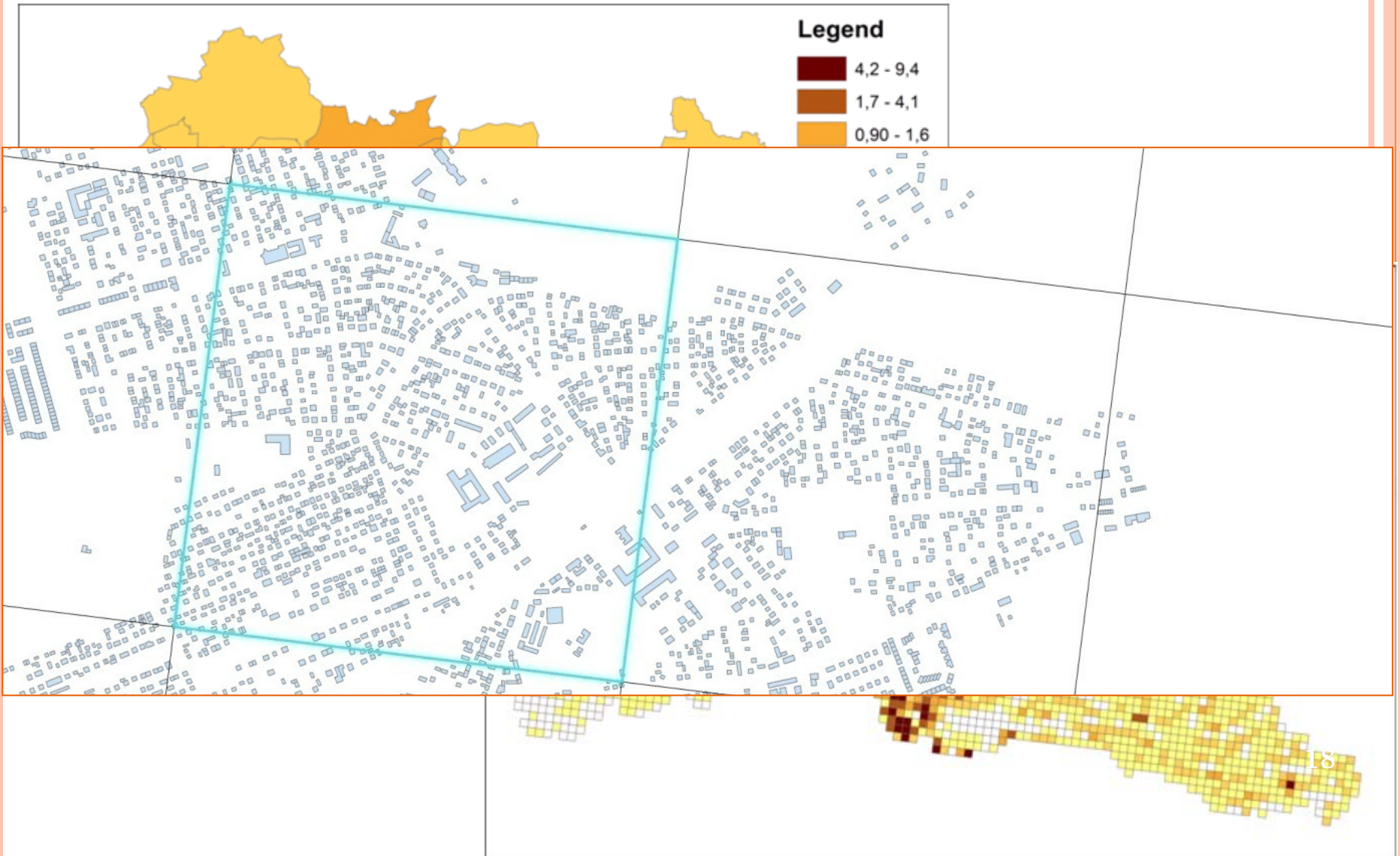


Figure 6 Value of the development rate in a 1x1 km grid [%]

DENSITY OF ROADS

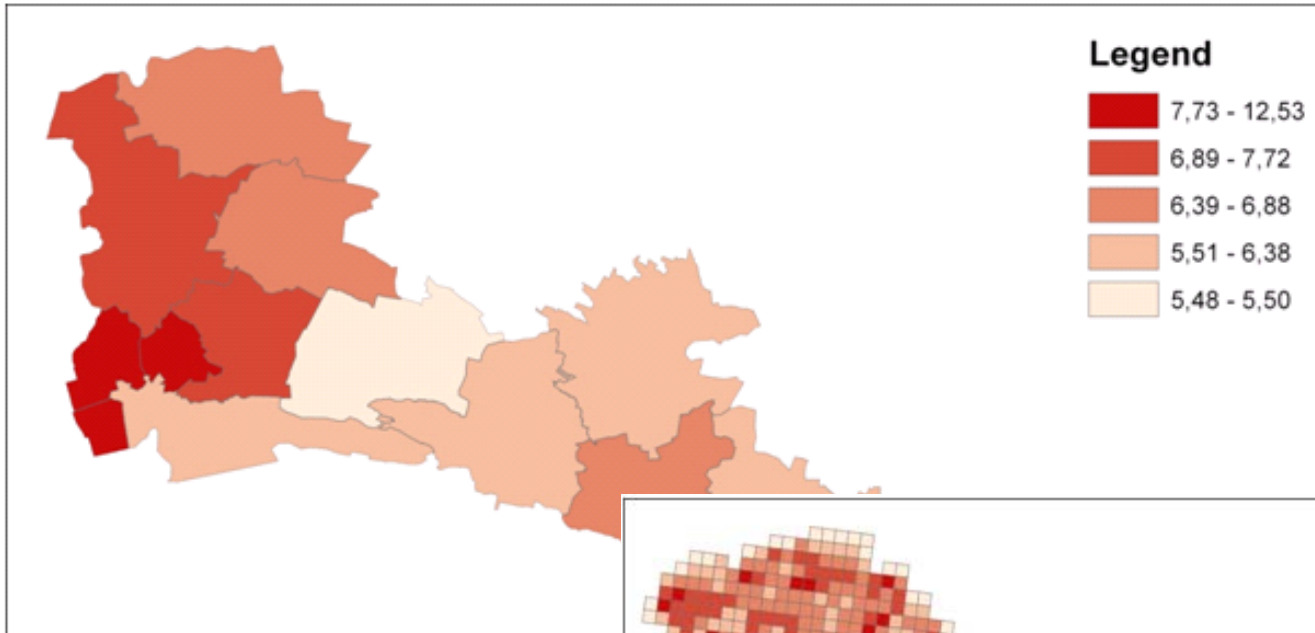


Figure 9 Density of roads:

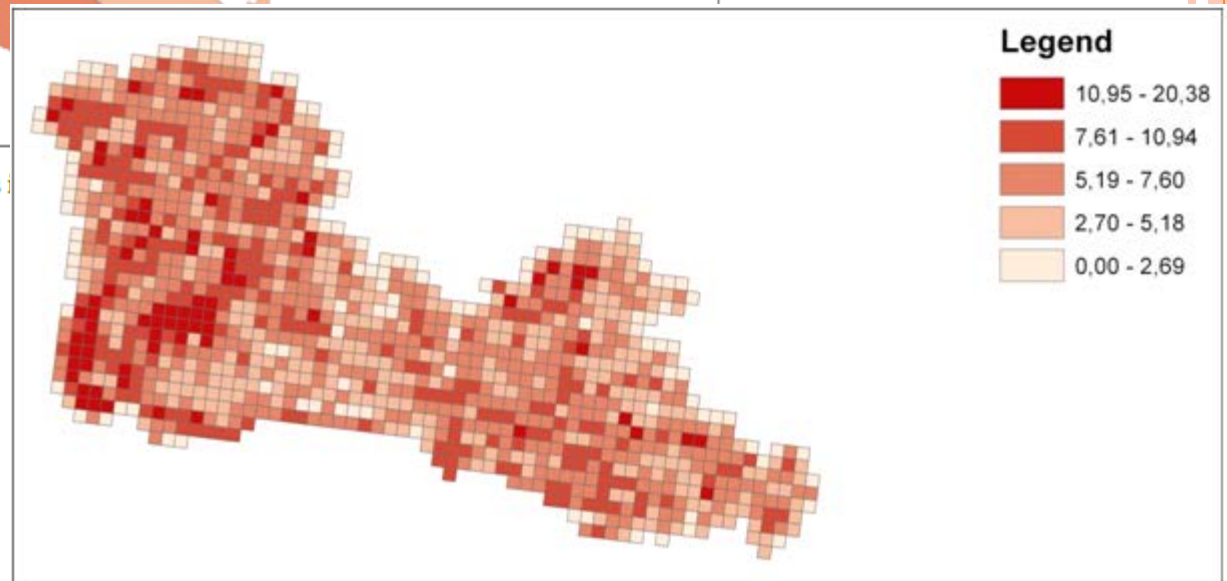


Figure 10 Road density in the grid [km/ km²]



**GEOSTATISTICS
PORTAL**

GEO.STAT.GOV.PL

START: JULY 2013

Agricultural Census 2010 results:

- Choropleth maps
- Cartodiagrams

Local Data Bank

GEOSTATISTICS PORTAL FUNCTIONALITY

Geovisualization of censuses results

- Agricultural Census 2010
- National Population and Housing Census 2011

Publication of spatial data produced within statistics

- statistical regions
- census enumeration areas

Publication of INSPIRE services for two spatial data themes

- statistical units
- population distribution (demography)

Advanced spatial analysis on microdata

- for authorized internal users (in the public statistics)

GEOVISUALIZATION OF CENSUSES RESULTS

Agricultural Census 2010

- Census data with spatial reference to:
 - location of the agricultural holding
 - location of its user

National Population and Housing Census 2011

- Census data with spatial reference to:
 - Location of the dwelling



USER DEFINED PARAMETERS

Mapa tematyczna

Kartogramy Kartodiagramy

Powszechny Spis Rolny 2010

- +
- +
- +
- +
- Powierzchnia zasiewów
 - Powierzchnia zasiewów ogółem
 - + Zboża razem
 - + Strączkowe na ziarno ogółem (z mieszankami zbożowo-strączkowymi)
 - + Okopowe jadalne i pastewne (z burakami cukrowymi)
 - + Oleiste na ziarno razem

Grupowanie wg:
 siedziba gospodarstwa siedziba użytkownika

Wskaźniki:
? % udział gospodarstw posiadających zboża ra: ▾

Wskaźnik wyliczany dla: Województwo ▾

Poziom atrybutu normalizującego: Województwo ▾

Liczba przedziałów: 5 ▾

Metoda tworzenia przedziałów: ? Odchylenie standardowe ▾

Skala barw: Paleta niebieska ▾

Przezroczystość: 0 20 40 60 80 100
0 %

Widoczne warstwy: etykiety granice

Ogranicz kartogram do zasięgu selekcji

Statystyki Wykres Zastosuj

THEMATIC PHENOMENA

GROUPING

INDICATORS

AGGREGATION LEVEL

NUMBER OF CLASSES

CLASS CALCULATION METHOD

COLOUR SCALE

TRANSPARENCY

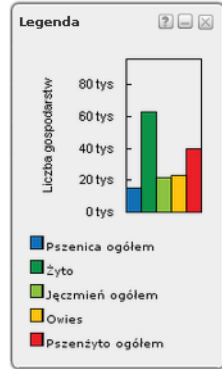
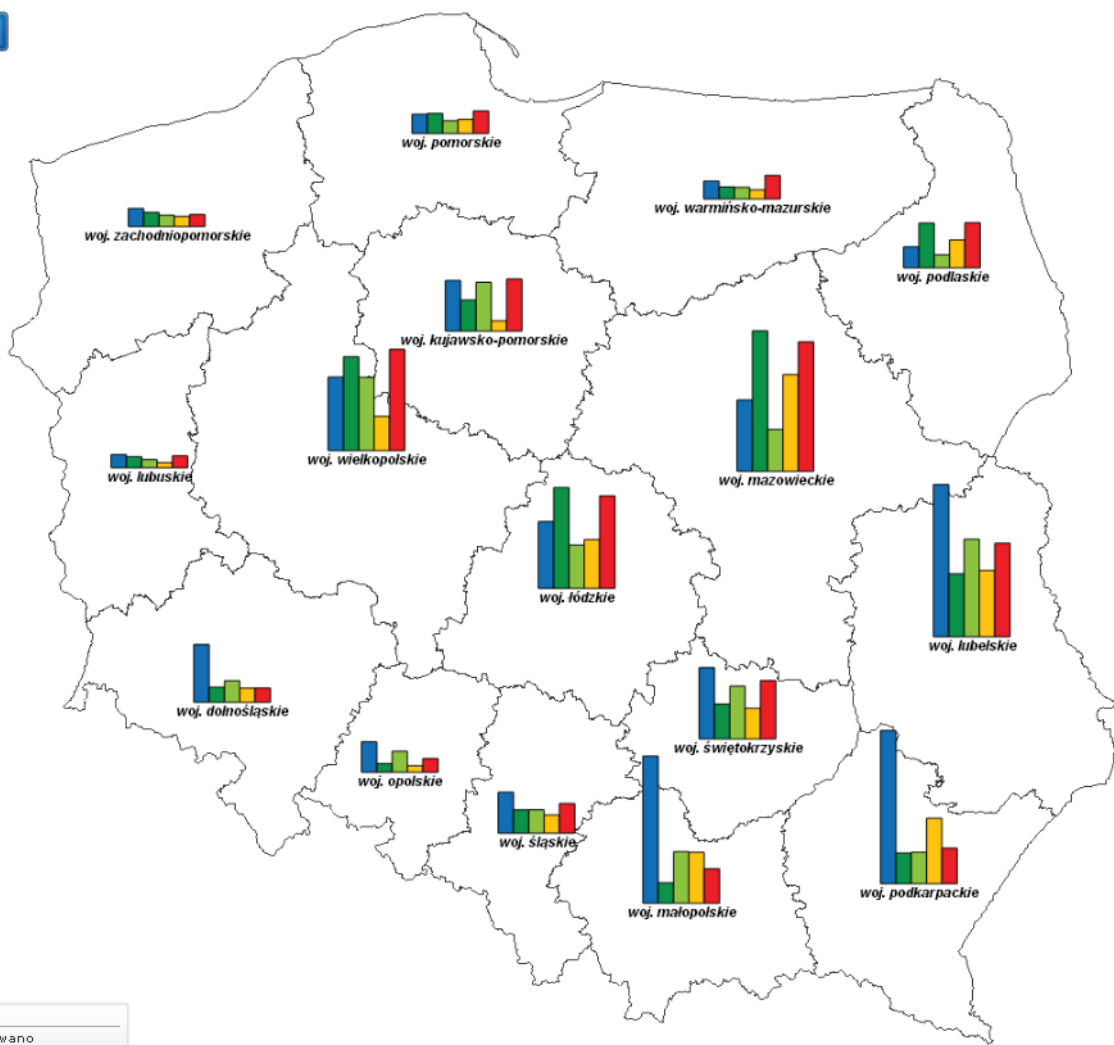
VISIBLE LAYERS

Zawartość mapy

Wyszukiwanie z...

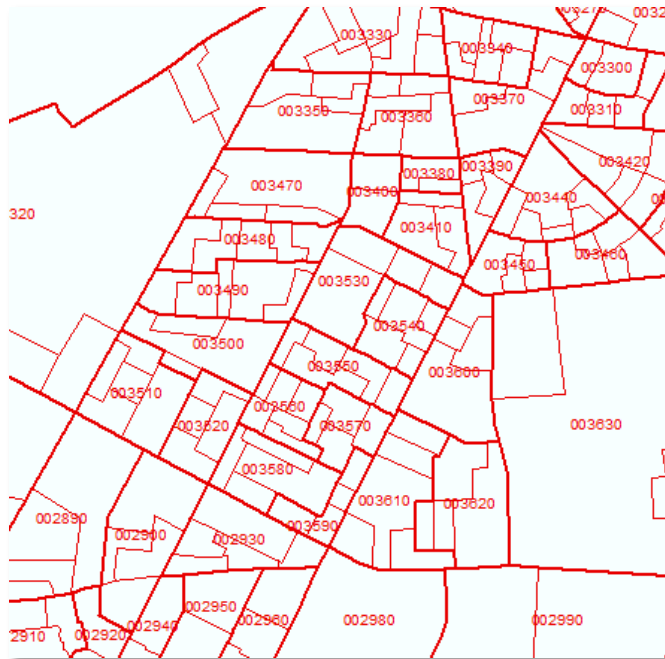
Zawartość mapy

Wyszukiwanie z...

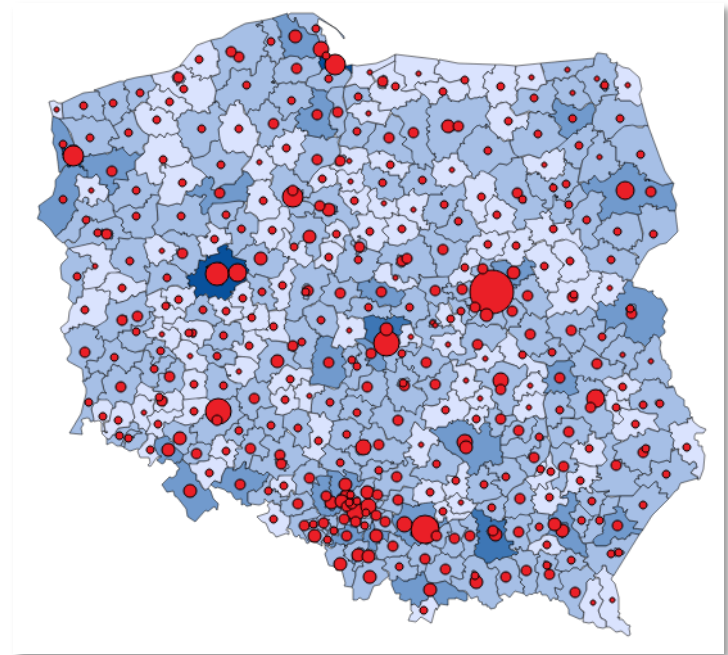


CSO IN INSPIRE

President of the CSO is a leading authority on two themes of spatial data in Annex III of the INSPIRE Directive:

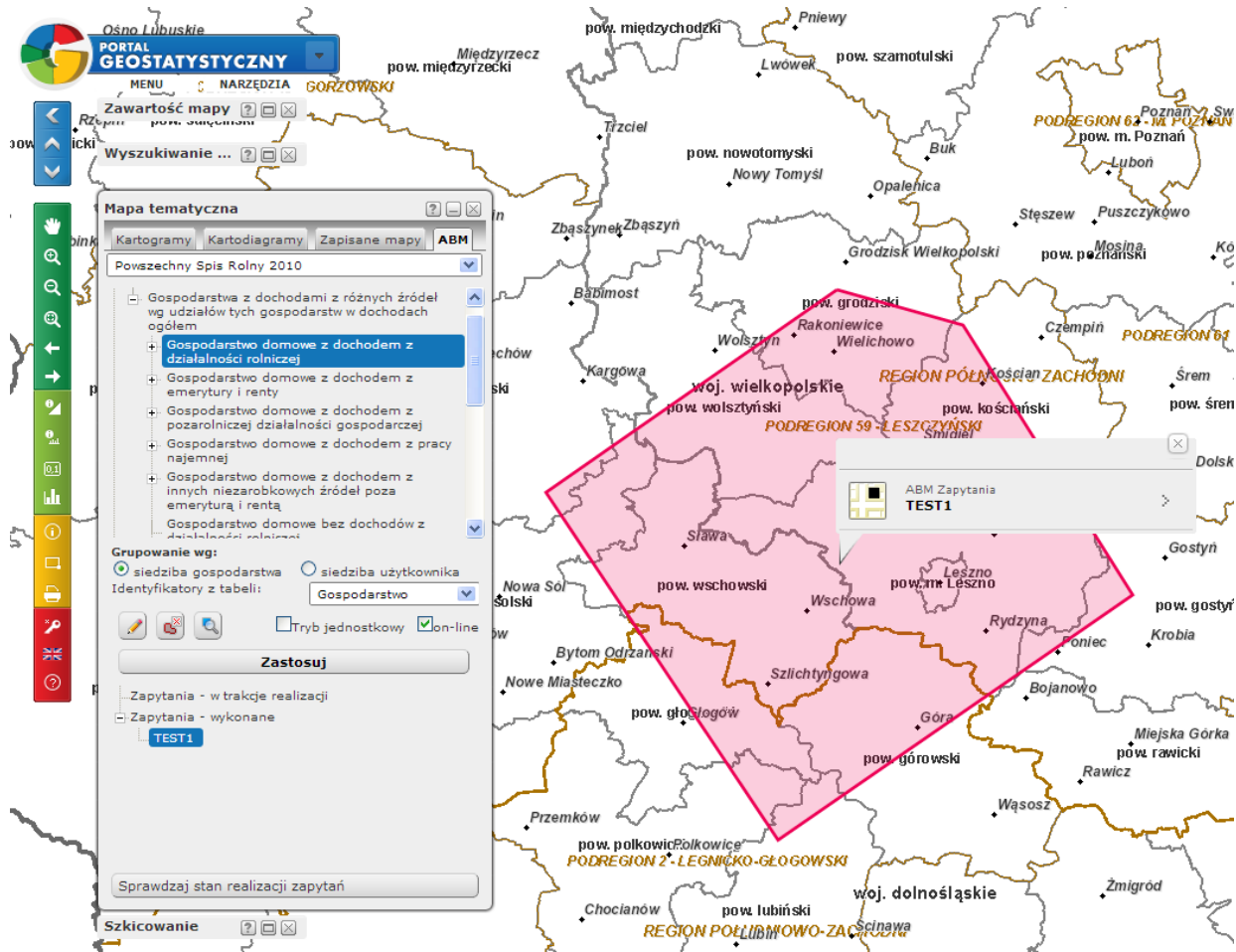


statistical units
SU

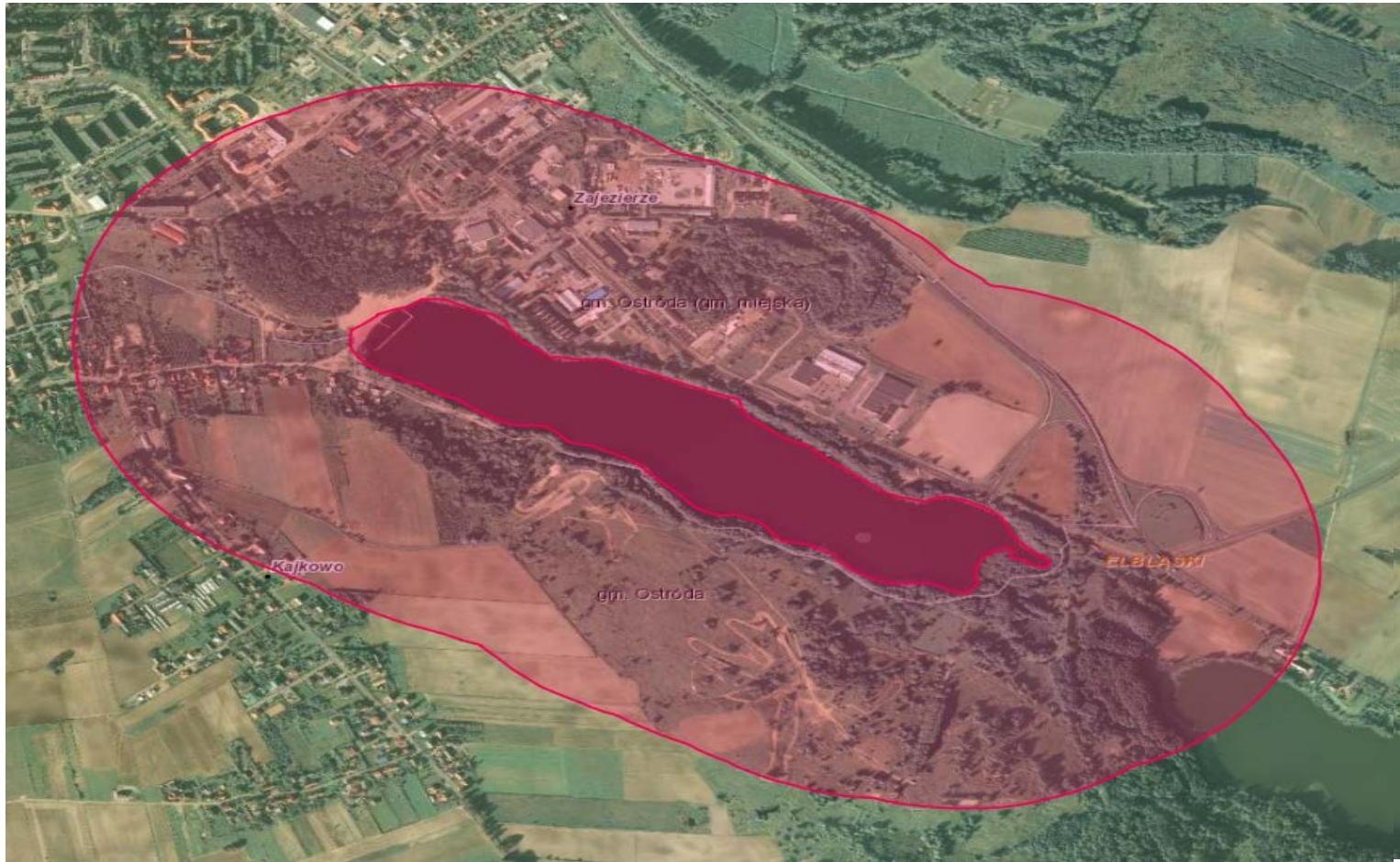


population distribution
(demography)
PD

INDIVIDUAL DATA DYNAMIC INQUIRIES



BUFFERING THE POLYGON



SUMMING UP

- georeferencing statistics started in 2009
- georeferenced address data base for all residential addresses was established
- georeferenced database are manifold, both for data preparation as well as for the dissemination of results
- Geostatistics Portal
- European Projects - broadening horizons

THANK YOU FOR YOUR ATTENTION

Amelia Wardzińska-Sharif

Programming and Coordination of Statistical Survey Department

Central Statistical Office of Poland

Q2014, 2-5 June 2014 Vienna